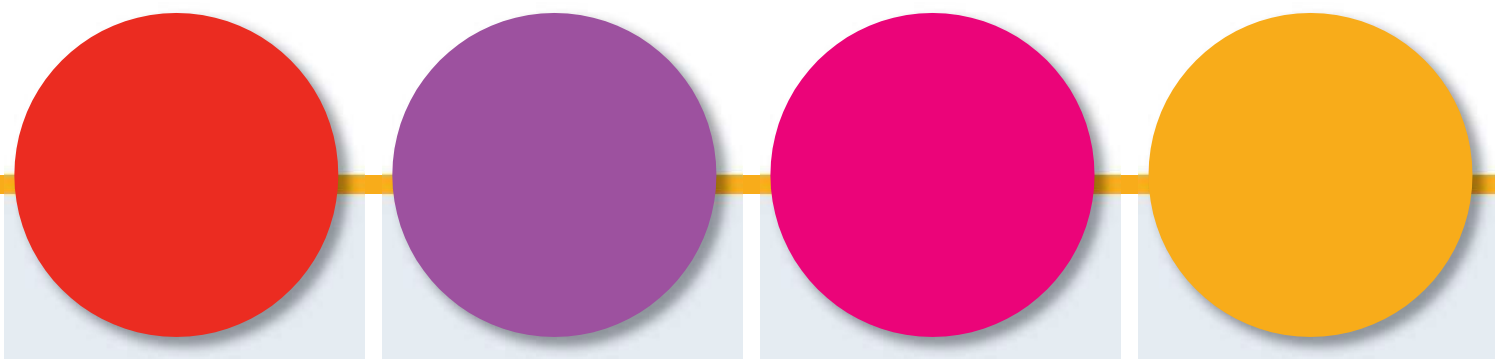




Growing Up in Ireland

10th Annual Research Conference

2018



Thursday 8th November 2018
Gibson Hotel, Dublin 1



CONFERENCE PROGRAMME

08:15 Registration

MORNING SESSION

Stratocaster A & B	
09:00	Introduction and Welcome – Professor Alan Barrett, ESRI
09:10	Opening Address by Minister Katherine Zappone, T.D, Department of Children and Youth Affairs
09:20	Findings from Cohort '08 (Infant Cohort) at 9 years – Professor Dorothy Watson, ESRI

9:55am – five minute room change

	Session A Stratocaster A & B Chair: Paul Bradshaw, ScotCen	Session B Stratocaster C Chair: Anne Murray, DES	Session C Alhambra Chair: Dr. Clare Farrell, DCYA
10:00	Elizabeth Doyle The impact of chronic bullying on risk of depression among young adolescents	Emer Smyth Decision-making about higher education: Choosing an institution	Rachel Palmer Maternal health behaviours of non-Irish nationals during pregnancy and the effect of acculturation
10:25	Colm Healy The relationship between emerging self-concept and adolescent psychotic experiences	Aisling Murray Measurements of cognition at age 17/18 years: Verbal fluency vs traditional vocabulary	Gretta Mohan The impact of prescription drug co-payments on healthcare utilisation and health

10:50 Tea and Coffee

	Session D Stratocaster A & B Chair: Dr. Fergal Lynch, DCYA	Session E Stratocaster C Chair: Dr. Eoin McNamara, ESRI	Session F Alhambra Chair: Prof. Elizabeth Nixon, TCD
11:15	Policy Session	Desmond O'Mahony	Ailbhe Booth
11:40	Policy applications for Growing Up in Ireland data and research: Panel discussion followed by Questions & Answers Chair: Dr. Fergal Lynch, Secretary General, DCYA	Chloé Beatty	Clara Hoyne
12:05	Presentations from Dorothy Watson (ESRI), Claire Finn (DCYA), Gráinne Collins and Dharragh Hunt (NDA)	Suzanne Egan	Aileen Wright
		Streets ahead: Outdoor play in young Irish children	The prevalence of speech and language difficulties at ages 3 and 5 and attendance at Speech and Language Therapy services

12:30 Lunch

AFTERNOON SESSION

Keynote Address

Stratocaster A & B

Chair: Dermot Ryan, Assistant Secretary General, DCYA

13:30 Professor Ingrid Schoon, UCL Institute of Education, University College London
Navigating the transition to adulthood: The role of structure and agency

14:30 Tea and Coffee

	Session G Stratocaster A & B Chair: Prof. Trevor Spratt, TCD	Session H Stratocaster C Chair: Dr. Carmel Hannan, UL	Session I Alhambra Chair: Prof. Lina Zgaga, TCD
14:50	James Williams Cross-cohort comparisons of socio-emotional well-being: Ireland, Scotland and New Zealand	Thorsten Schneider Partnership dissolution after childbirth in Ireland: On the importance of pregnancy intentions	Rhoda Sohun Physical activity parenting and implications for future interventions
15:15	Daráine Murphy The impact of early life stress on the persistence of psychotic like experiences in adolescence	Helen Russell Mothers' employment and the cost of childcare in Ireland	Eoin McNamara Tracking the physical activity levels of the <i>Growing Up in Ireland</i> child cohort over eight years
15:40	Niamh Dhondt Mediating factors in the relationship between childhood stressful life events and child, adolescent and persistent psychopathology: A national longitudinal cohort study	Megan Curran Large family, poor family? A comparative profile of children's material resources in the modern large family and implications for social policy	Mark McGovern Cross-generational trajectories in weight gain in Ireland
16:05	Sarah-Rose Whelan Exposure to adverse home experiences and children's social competencies in peer relations	Lee-Ann Burke Psychological resilience during the Irish recession: Evidence from the <i>Growing Up in Ireland</i> study	Emer Scott Childhood personality, psychological traits and weight status over time

16:30 Finish

● THE CONTEXT – ABOUT *GROWING UP IN IRELAND*

Growing Up in Ireland is the national longitudinal study of children. It is the most significant study of children and young people ever to have taken place in this country and is helping us to improve our understanding of all aspects of child and adolescent development.

The study is following the progress of two groups of children. The first is a “Child Cohort” of 8,500 children who were first interviewed at 9 years of age (also known as Cohort '98). They were re-interviewed at 13 and 17/18 years, and are currently being re-interviewed now that they are age 20. The second is an “Infant Cohort” of 11,100 children who were recruited at 9 months of age (also known as Cohort '08). They (and their main caregivers) were initially interviewed at 9 months, and again at 3 years and 5 years. Their main caregiver was interviewed on a postal basis when the child was 7/8 years old and this was followed by an intensive face-to-face interview when the Study Child was 9 years old in 2017.

The main aim of the study is to paint a full picture of children and youth in Ireland and how they are developing in the current social, economic and cultural environment. This information is being used to assist in policy formation and in the provision of services, with a view to ensuring that all children living in Ireland have the best possible start in life.

Growing Up in Ireland is funded by the Department of Children and Youth Affairs, with a contribution from The Atlantic Philanthropies^[1] in Phase 2. The study is managed and overseen by the Department of Children and Youth Affairs in association with the Central Statistics Office. It is carried out by a consortium of researchers led by the Economic and Social Research Institute (ESRI) and Trinity College Dublin.

● CONFERENCE AIMS

This is *Growing Up in Ireland's* tenth annual research conference and has been organised by the joint ESRI/TCD Study Team. Dr Katherine Zappone, T.D., Minister for Children and Youth Affairs, will launch the latest Key Findings from Cohort '08 (age 9 years) at the conference. This year's conference will also include a dedicated policy-oriented panel discussion on the application of *Growing Up in Ireland* data to Irish policy. With over 20 other papers being presented, the conference will provide a platform for discussion on a broad range of research from both cohorts.

● KEYNOTE SPEAKER

Professor Ingrid Schoon is Professor of Human Development and Social Policy at the Institute of Education, University College London and Research Professor at the Social Science Centre (Wissenschaftszentrum) Berlin. Her research activity focuses on the study of risk and resilience, particularly during the transition to adulthood, and in relation to social and gender equalities in achievement, health and well-being. Professor Schoon has wide experience in the use and direction of longitudinal cohort studies, and is currently President of the Society for Longitudinal and Lifecourse Studies (SLLS). She has published widely, including a monograph on 'Risk and Resilience' (2006), co-edited books on 'Transitions from School to Work: Globalisation, Individualisation, and Patterns of Diversity' (2009) with Rainer K. Silbereisen, 'Gender differences in aspirations and attainment: A longitudinal perspective' (2014) with Jacquelynne Eccles, and 'Young People's Development and the Great Recession: Uncertain Transitions and Precarious Futures' (2017) with John Bynner - all published by Cambridge University Press, and a book on 'Pathways to Adulthood' with Rainer Silbereisen with UCL IoE Press.

[1] About The Atlantic Philanthropies: The Atlantic Philanthropies are dedicated to bringing about lasting changes in the lives of disadvantaged and vulnerable people. Atlantic is a limited life foundation that will complete grant making in 2016. To learn more, please visit: www.atlanticphilanthropies.org.